



Description

KNOT is a collection of stately pendant lights that appose two dramatically dissimilar materials. The design combines coarse natural fibre with smooth, transparent handblown glass to arouse a contrast as striking as it is dignified.



Tech. description

The light comprises a glass shade, glass diffuser, metal component with LED module, and linen rope and is suspended from the ceiling canopy with a special bracket. The bottom section of the light is engineered as SELV.

Colours options: https://brokis.sharepoint.com/:b/s/brokis_sp/ESBt-eSfOxJNm-XaKoNYvrwBkv35kyCKDVFJdHpyvS1Bcg

CONSTRUCTION SPECIFICATION

Weight: 3.5 kg
Construction material: glass, metal, linen rope
Cord length [mm]: Individual, max. 5,000 mm
Mounting: Ceiling
Environment: Indoor

DIMENSIONS [mm]



ELECTRICAL SPECIFICATION

Input voltage [V]: 100 - 240 V
Frequency [Hz]: 50-60 Hz
Max. power [W]: 6,5 W
Coverage IP: 20
Socket: LED module
Light source: -
Energy class: E

CERTIFICATIONS





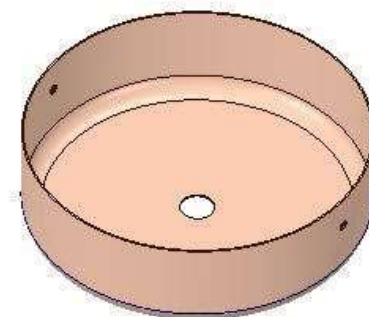
CM13871

Type	LED module
Lamp wattage [W]	6,5 W
Input voltage [V]	24 VDC
Energy class	E
Flux [lm]	773 lm
Light colour [K]	2700 K
CRI	93
Dimmable	yes



INNER FIXTURE

Dimensions O x w [mm]	202 x 60 mm
Weight [kg]	1.15 kg
Material	metal



Drawing

Hole placement

