



Description

KNOT is a collection of stately pendant lights that appose two dramatically dissimilar materials. The design combines coarse natural fibre with smooth, transparent handblown glass to arouse a contrast as striking as it is dignified.

Tech. description

The light comprises a glass shade, glass diffuser, metal component with LED module, and linen rope and is suspended from the ceiling canopy with a special bracket. The bottom section of the light is engineered as SELV.

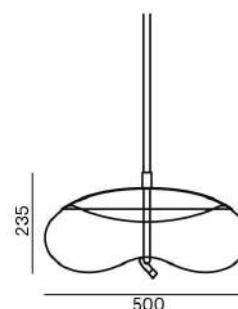


Colours options: https://brokis.sharepoint.com/:b/s/brokis_sp/EQjYh_Ye4-BAjAaiHO4E73YBWn-rJKSLH3CX5jYFzff3Nw

CONSTRUCTION SPECIFICATION

Weight:	12 kg
Construction material:	glass, metal, linen rope
Cord length [mm]:	Individual, max. 5,000 mm
Mounting:	Ceiling
Environment:	Indoor

DIMENSIONS [mm]

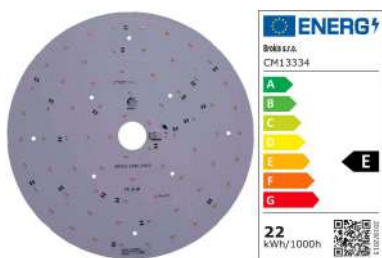


ELECTRICAL SPECIFICATION

Input voltage [V]:	100 - 240 V
Frequency [Hz]:	50-60 Hz
Max. power [W]:	21,6 W
Coverage IP:	20
Socket:	LED module
Light source:	-
Energy class:	E

CERTIFICATIONS





CM13334

Type	LED module
Lamp wattage [W]	21,6 W
Input voltage [V]	24 VDC
Energy class	E
Flux [lm]	2925 lm
Light colour [K]	2700 K
CRI	93
Dimmable	yes



INNER FIXTURE

Dimensions O x w [mm]

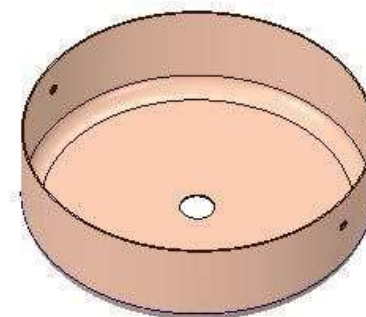
202 x 60 mm

Weight [kg]

1.15 kg

Material

metal



Drawing

Hole placement

